

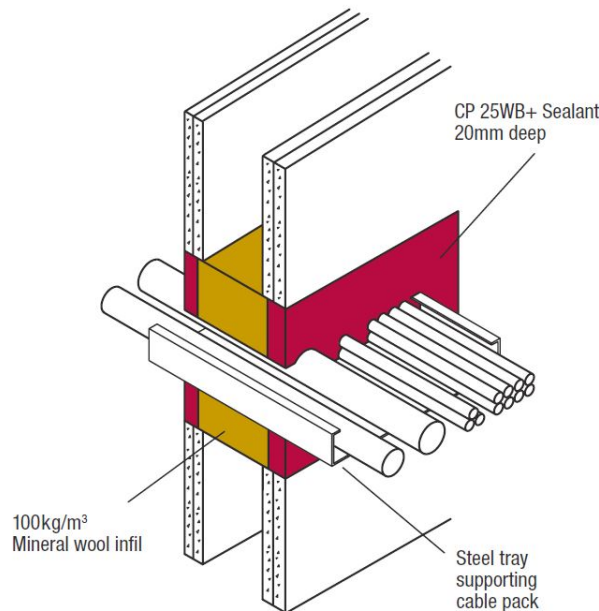
3M™ Fire Protection

Design Specification Sheet : 3M CP 25WB+ Sealant for Cables

Through Penetration	Construction Type	FRR	Compliance Report
All D1 and D2 cables as per AS1530.4, including cable trays	Plasterboard wall with min 26mm fireboard each side. Wall cavity insulation optional. Solid or hollow masonry and concrete wall 116mm thick.	-/120/30 or -/120/120 with E-5A Mat	AS 1530.4 & AS 4072.1 Exova RIR 23263-01 System/FPA Register ID# FC217

3M™ CP 25WB+ Sealant and 3M™ E-5A Mat Fire Stopping System

Cables and trays in Concrete, Masonry or Plasterboard Walls



Installation

1. Position 75mm mineral wool infill (e.g. 3M PM4) leaving minimum 20mm for sealant.
2. 3M™ CP 25WB+ Sealant to a depth of 20mm each side of wall. Annular space 25-60mm. Separation between penetrations 40mm.
3. 3M™ E-5A Intumescent Mat may be wrapped around cables for 500mm each side to increase thermal rating to 120mins. Wire the E-5A Mat 50mm from each end and one at centre point.
4. Walls with less than 26mm of plasterboard may be patched. Follow GIB guidelines (75mm min from seal edge)

3M Australia Pty Ltd
Industrial Adhesives & Tapes Division
 Bldg A, 1 Rivett Road,
 North Ryde, NSW 2113
 Phone 136 136 (Option 2)
 Email 3mindustriaucs@mmm.com
 Web www.3m.com.au

3M New Zealand Ltd
Industrial Adhesives and Tapes Division
 94 Apollo Drive, Rosedale
 Auckland 0632
 Phone 0800 474 787
 Email 3mnzibt@mmm.com
 Web www.3m.co.nz

User is responsible for determining whether the 3M product is fit for a particular purpose and suitable for user's application. Limitation of Liability. Except where prohibited by law, 3M will not be liable for any loss or damage arising from this 3M product, whether direct, indirect, special, incidental or consequential, regardless of the legal theory asserted, including warranty, contract, negligence or strict liability. 3M and Interam are a trademark of 3M Company.